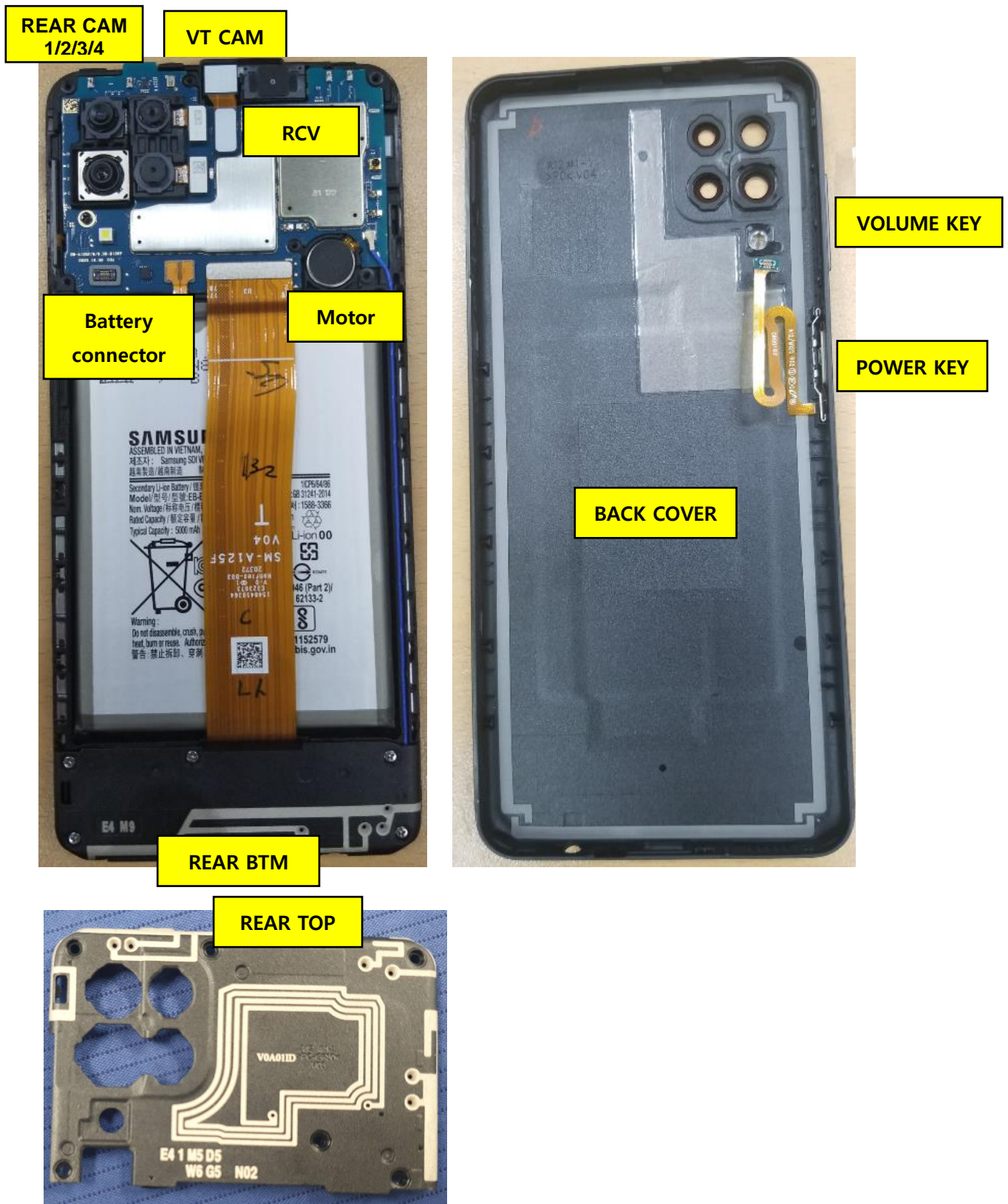


---

## 7. Level 2 Repair

---

### 7-1. Components on the Rear Case



## 7. Level 2 Repair

### 7-2. Pre-requisite

	
<b>Tweezers / Disass'y Stick / Screw Driver</b>	<b>Anti-static Gloves</b>
	
<b>Anti-static Mat</b>	<b>Hot Plate</b>
	
<b>A OCTA Disassembly Holder</b>	<b>OCTA Disassembly Upper</b>
	
<b>Ethyl Alcohol</b>	<b>Cotton Swab</b>

## 7. Level 2 Repair

### 7-3. Disassembly

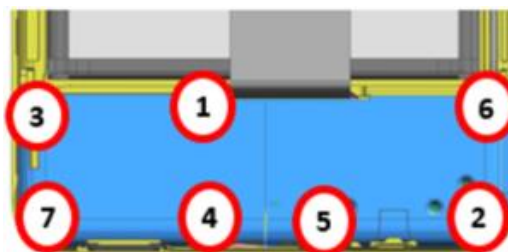
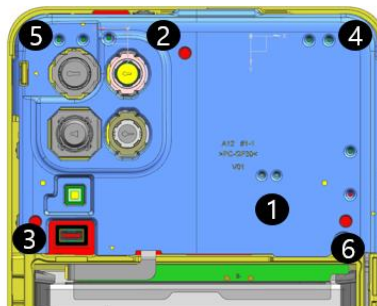
1

- 1) Remove SIM Tray on side.
- 2) Disassemble Rear Cover.
- 3) Disassemble Power key connector.



2

Remove screws 13ea.



※ Caution

Be care of scratch.

※ Caution

Be care of scratch.

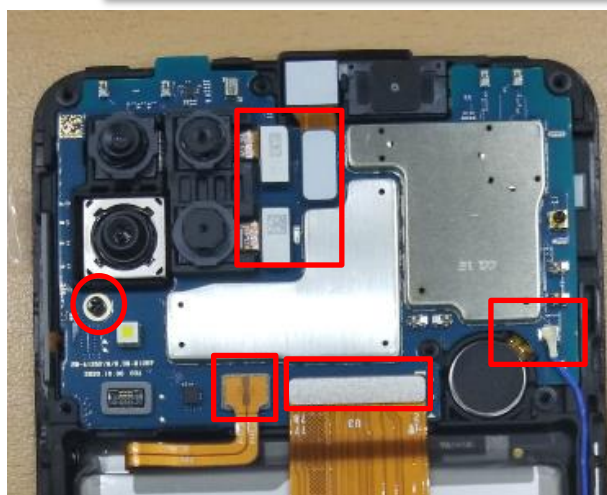
3

- 1) Disassemble Rear\_TOP\_ANT.
- 2) Disassemble Rear\_BTM\_ANT.



4

- 1) Remove PBA screws 1 points.
- 2) Disassemble LCD Connector.
- 3) Disassemble Camera Connector(3ea).
- 4) Disassemble Battery Connector.
- 5) Disassemble coaxial cable.



※ Caution

Be care of Rear damage.

※ Caution

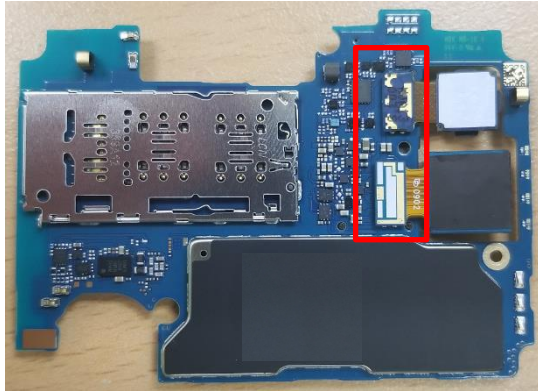
- 1) Be care of scratch.
- 2) Be care of Rear and connector damage.
- 3) Be careful not to damage the PBA.



## 7. Level 2 Repair

5

1) Disassemble Camera Connector(2ea).



※ Caution

- 1) Be care of scratch.
- 2) Be careful not to damage the PBA.

6

- 1) Disassemble SUB PBA Connector.
- 2) Disassemble coaxial cable
- 3) Disassemble SUB PBA.

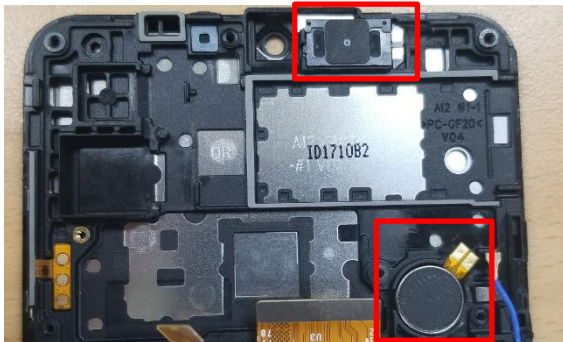


※ Caution

- 1) Be care of scratch.
- 2) Be careful not to damage the PBA.

7

Detach other components.

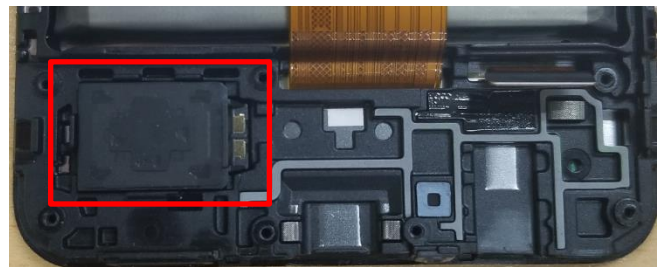


※ Caution

Be care of motor & RCV damage.

8

Detach other components.



※ Caution

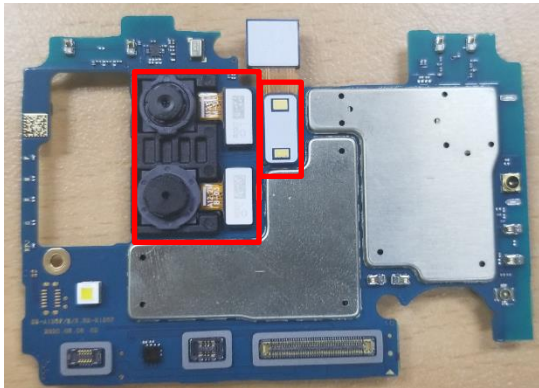
Be care of SPK damage.

## 7. Level 2 Repair

### 7-4. Assembly

1

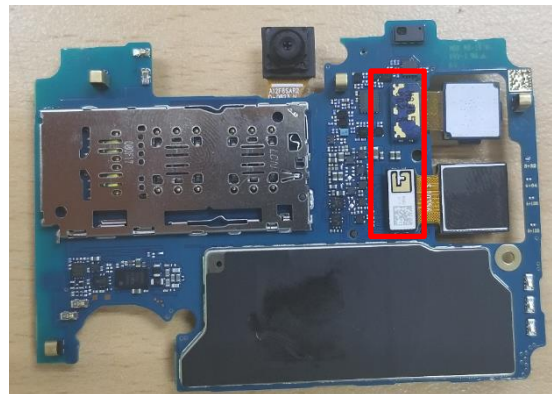
- 1) Assemble Main Camera(2ea).
- 2) Assemble VT Camera.



※ Caution  
Be care of PBA damages.

2

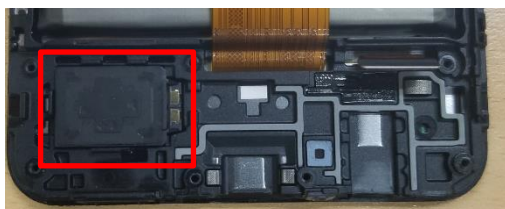
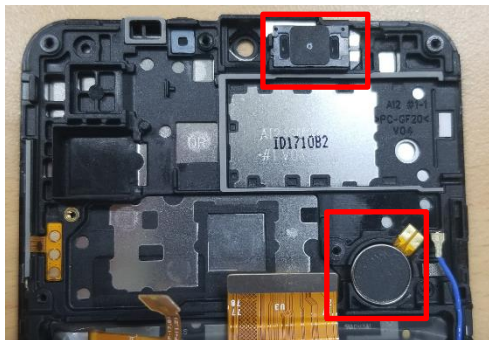
- 1) Assemble Main Camera(2ea).



※ Caution  
Be care of PBA damages.

3

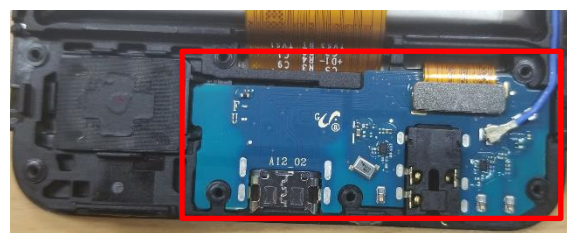
- Assemble RCV, MOT, SPK.



※ Caution  
Be care of RCV, NOT, SPK.

4

- 1) Assemble SUB PBA
- 2) Assemble SUB PBA connector
- 3) Assemble coaxial cable

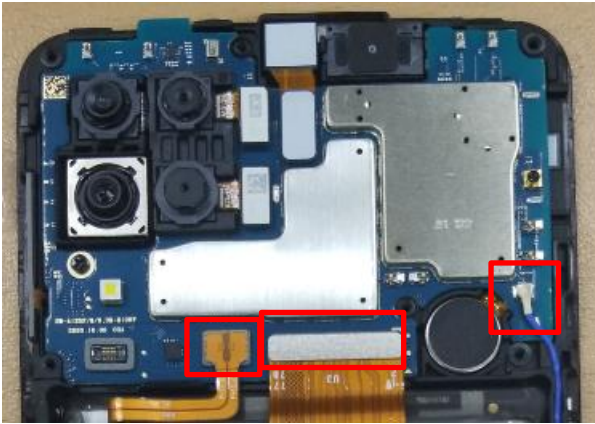


※ Caution  
Be care of PBA damages.

## 7. Level 2 Repair

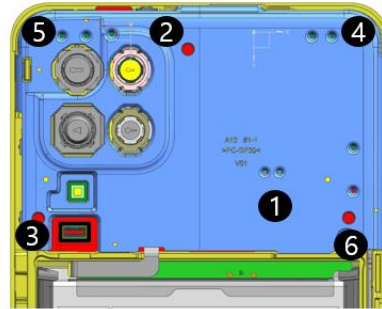
5

- 1) Assemble PBA
  - 2) Assemble LCD connector
  - 3) Assemble Battery connector
  - 4) Assemble coaxial cable
  - 5) Screw insertion 1 Point.
- \* Torque Value : 1.1  $\pm$ 7%



6

- 1) Assemble REAR TOP
  - 2) Screw insertion 6 Point.
- \* Torque Value : 1.4  $\pm$ 7%

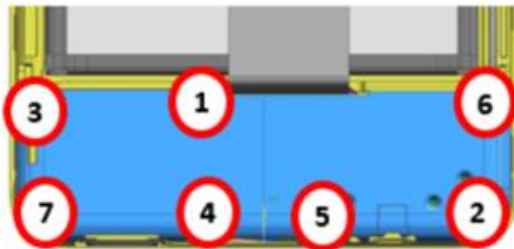


※ **Caution**  
Be care of PBA damages.

※ **Caution**  
Be care of scratch and REAR damage.

7

- 1) Assemble REAR BTM
  - 2) Screw insertion 7 Point.
- \* Torque Value : 1.4  $\pm$ 7%



※ **Caution**  
Be care of scratch and REAR damage.

8

- 1) Assemble Power key connector.
- 2) Rear Cover.
- 3) Insert SIM Tray on side.



※ **Caution**  
Be care of scratch and REAR damage.